



on-farm network
PARTICIPATORY • PRECISE • PROACTIVE

Soybean Seeding Rate Trial

Trial ID: 2019SP02 – R.M. of Dauphin

Objective: Quantify the agronomic impacts of a seeding rate of 190,000 seeds/ac, 160,000 seeds/ac and 130,000 seeds/ac.

Summary: There was no significant soybean yield difference between seeding rates of 130 000 seeds/ac, 160 000 seeds/ac and 190 000 seeds/ac.

Trial Information

Treatment	130k vs 160k vs 190k
Rural Municipality	Dauphin, RM of
Soil Texture	Clay
Previous Crop	Canola
Tillage	Minimal Tillage
Seeding Equipment	54ft Bourgault 5710 Hoe Drill
Seeding Date	May 18
Variety	DKB0009-89
Row Spacing	10"
Harvest Date	October 7

Precipitation (mm)

	May	June	July	August
Normal	54.3	86.7	73.2	63.3
Rainfall	10.9	60.3	65.6	45.9

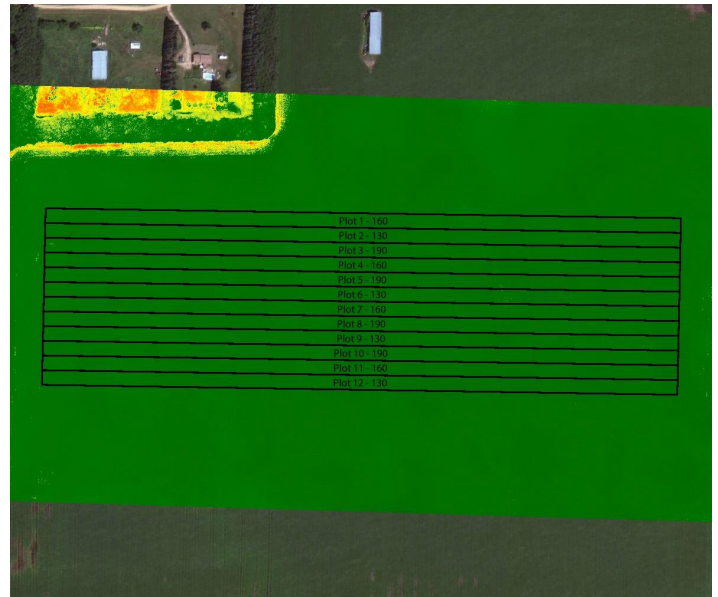
Plant Stand (plants/ac)

	V2	R6
130K	141 000	133 000
160K	154 000	149 000
190K	207 000	204 000

Overall Yield

	Mean (bu/ac)
130K	42.0
160K	43.1
190K	42.7
P-Value	0.2073
CV	3.6%
Significance	No

NDVI Field Image – August 6, 2019



Yield by Treatment

