

## DISEASES

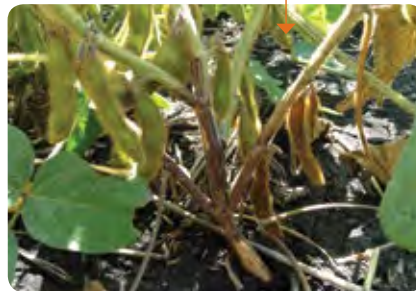
Seed and seedling diseases – *Phytophthora, Pythium, Rhizoctonia, Fusarium*



Sunburn – physiological, not a pathogen



early season – *Phytophthora root rot* – late season



Bacterial blight



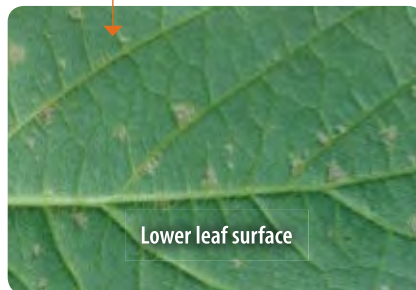
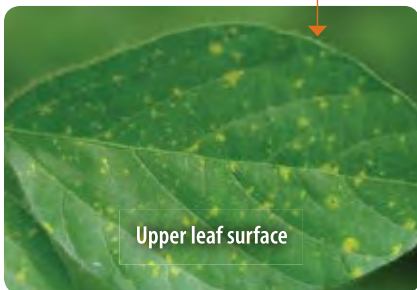
Septoria brown spot



Phyllosticta leaf spot



Downy mildew



Soybean cyst nematode



*SCN has not been detected in Manitoba yet, but vigilant scouting in high-risk fields is important.*

*continued on back* ➤

Pod and stem blights



White mould – Sclerotinia



## INSECTS

Seedcorn maggot



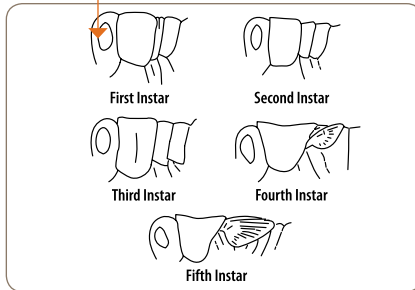
Cutworms



Wireworms



Grasshopper



Soybean aphids



Two-spotted spider mites



Green cloverworm



Corn earworm

